

Welcome!

Welcome to the Chattahoochee National Forest! Here are a few waterfalls we recommend visiting while you are here. Please remember that the immediate area around a waterfall can be dangerous. Obey all posted signs and do not attempt to climb on surrounding rocks. We hope your visit is safe and enjoyable!

Waterfalls

DeSoto Falls (Blue Ridge)

Directions: From Blairsville, GA take U.S. Hwy. 19/129 south for 17 miles to campground entrance on right.

From Dahlonaga, GA take Hwy. 19 north for 18 miles to campground entrance on left.

Trail Information: (0.75 miles) There are two waterfalls along the DeSoto Falls Trail. The lower falls cascade about 20 feet. The upper, and most scenic, falls drop 80 feet. Both are accessed by a maintained trail leading from the day use parking lot located in the Desoto Falls Recreation Area. It is approximately ¼ mile to the lower falls and approximately ¾ mile to the upper falls. Please be advised that these are not loop trails. Please stay on the trail and observation decks!

Helton Creek Falls (Blue Ridge)

Directions: From Blairsville, take US 129 south for 11 miles. Turn left on the first gravel road past the entrance to Vogel State Park. Go 2.2 miles to a small pullout parking area. Trailhead will be on right as indicated.

Trail Information: (0.2 miles) The Helton Creek Falls Trail is an easy .2 mile hike. Please be advised there are many abrupt changes in grade along this short walk.

Please stay on the trail and observation deck!

High Shoals Falls (Blue Ridge)

Directions: Take GA 75 north from Helen for 11.4 miles. Turn right onto F.S. Road 283 at the High Shoals sign. Go 1.5 miles on this road to the High Shoals Scenic Area.

Trail Information: (1.2 miles) The High Shoals Trail follows along High Shoals Creek to observation decks besides two of the most scenic waterfalls. It is approximately 1.2 miles to the lower falls and 1 mile to the upper falls. Please stay on the trail and observation decks!

Raven Cliff Falls (Chattooga River)

Directions: Take GA 75-N from Helen 1.5-miles to junction with GA 356 (Alt. 75), turn left onto GA 356 and continue 2.2 miles to the Russell-Brasstown Scenic Byway (#348), go 3-miles. Parking lot is located on left shoulder of road at mile marker #3. Look for trail signs.

Trail Information: (3-miles) Located in the Raven Cliffs Wilderness Area, this blue blazed trail follows alongside Dodd Creek a good distance and then rambles through shady hemlock groves and dense laurel and rhododendron thickets. In addition to the main attraction, the trail offers 3 other smaller falls along the way. Although restrooms are available at the trailhead, there are no shower facilities. This is not a loop trail!

Dukes Creek Falls (Chattooga River)

Directions: Take GA 75-N from Helen for 1.5-miles. Turn left on GA 356 (Alt. 75) and go 2.3 miles to the Richard Russell Scenic Byway. Turn right and go 2-miles to the Dukes Creek Falls Recreation Area.

Trail Information: (1-mile one-way) Located in the Dukes Creek Falls Recreation Area, features several beautiful cascades that can be viewed from near or far. The main attraction to the area is its 300 ft falls from Davis Creek into the Dukes Creek Gorge. The trail is handicap accessible up to the first observation deck.

Horse Trough Falls (Chattooga River)

Directions: From Helen continue north on Hwy 17/75 for 9.4-miles. Turn left onto FS Road #44 and proceed 4.8 miles to FS Road #44F on the right. Follow FS Road #44 across ford approximately 0.2-miles to trailhead.

Trail Information: (0.4-miles) Located deep within the Chattahoochee Wildlife Management Area, this short hike to a beautiful and rare falls is indeed a hidden treasure.

Long Creek Falls (Blue Ridge)

Directions: From Blue Ridge, GA go south on Aska Road to end (13.5 miles). Turn right onto Newport Road, go 4.5 miles to end. Turn left onto Doublehead Gap Road, cross a concrete bridge and come onto dirt-gravel road. Continue on this road about 0.3 miles to intersection with dirt-gravel USFS Road 58 intersecting sharply from right. Turn onto USFS 58 and continue into forest and uphill 5.3 miles to Three Forks. The trail on the left will take you to Long Creek Falls.

Trail Information: (1.1 miles) The trail begins at Three Forks, a popular dispersed recreation area in the southeast corner of the District. The trail begins on the north side of the road and starts as a relatively gradual hike alongside Long Creek. There are three short ascents before reaching the blue blazed side trail to the falls at 1.1 miles. The hike follows the 2 x 6" white painted blazes

of the Appalachian Trail north to the side trail.

Fall Branch Falls (Blue Ridge)

Directions: From Blue Ridge, GA go south 8 miles on Aska Road. Turn right on Stanley Gap Road (Toccoa Riverside Restaurant on your left). Trail is 3.2 miles on your right from turnoff

Trail Information: (1/4 mile to base of falls) The trail begins on the north side of the road and starts its ascent to the top of the falls. The trail follows the white diamonds of Benton MacKaye Trail. An unmarked trail on your right leads to the base of the falls (50 yards) where an observation deck offers a spectacular view of the waterfalls.

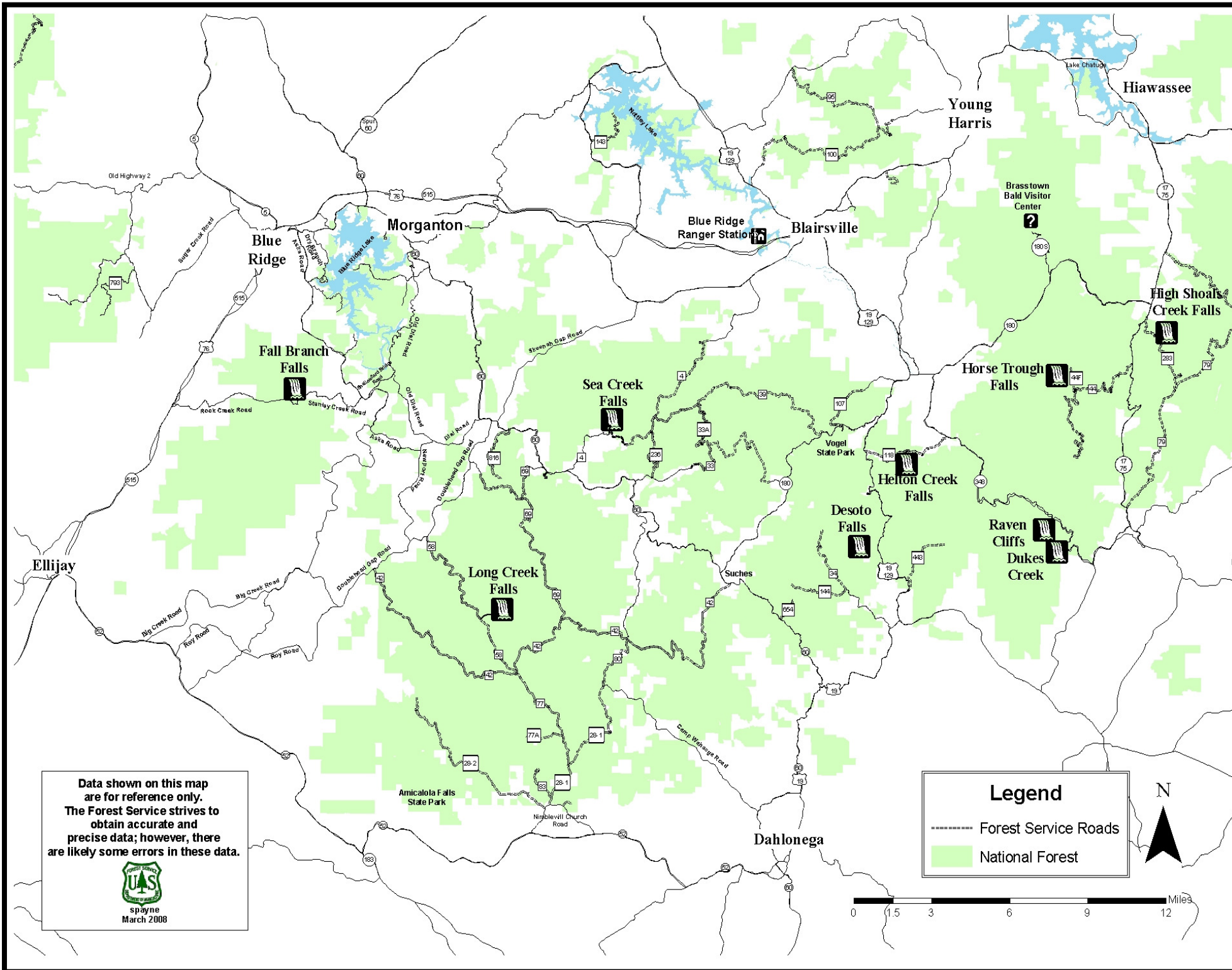
Sea Creek Falls (Blue Ridge)

Directions: From Morganton, GA go south on Georgia Hwy. 60 16 miles, turn left on Forest Service Road 4. Continue on FS Road #4 2.9 miles until road forks. Turn left and follow road 0.2 miles. Park and walk 0.2 miles to falls.

Trail Information: (0.2 miles) Easy walk. 30 foot waterfall with shallow pool at bottom of falls.

WARNING

The North Georgia Mountains and Chattahoochee National Forest abound with beautiful waterfalls, but please be cautious when visiting these spectacular places. DO NOT attempt to climb around waterfalls. Climbing can cause resource damage. Rocks are often slippery and water can be swift. For your safety, please obey all warning and posted signs. Observation decks have been built at many of the most popular waterfalls. Please use them. They offer the best vantage point for viewing or photographing the waterfall. Most of all, we hope you enjoy your visit!

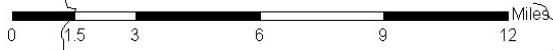


Data shown on this map are for reference only. The Forest Service strives to obtain accurate and precise data; however, there are likely some errors in these data.



Legend

- Forest Service Roads
- National Forest



Area Waterfalls on the Blue Ridge & Chattooga River Ranger Districts



U.S. Forest Service
Chattahoochee National Forest
<http://www.fs.fed.us/conf>



The USDA is an equal opportunity provider and employer.